



Your Arizona guide to ASU State University



What does it mean to go to the **No. 1 school for innovation and global impact?**

Arizona State University is a new kind of university, dedicated to innovative ideas and academic excellence to help you get where you want to be in life. At ASU, you are joining a community of scholars from around the world.

- Courses are taught by a student-focused faculty that includes Nobel laureates, Pulitzer Prize winners and Fulbright Scholars.
- Knowledge delivery goes beyond traditional methods, putting students in the middle of active learning experiences.
- Many students have opportunities to work with professors as team members on significant research projects.

You'll thrive in this environment of innovation, excellence and inclusion, which in turn will prepare you to thrive throughout your life.

Top 10 in the world for student-employer connections due to a robust network of industry partners, abundant internship opportunities and an innovative career platform to connect you with employers.

Ahead of Purdue, Stanford and MIT
– QS World University Rankings, 2022

#2 undergraduate program in supply chain management and logistics in the U.S.

– U.S. News & World Report, 2023

Innovation with impact

#4 graduate program in information and technology management in the U.S.

– U.S. News & World Report, 2022

Top 10 in the world for patents among universities granted U.S. patents.

– U.S. National Academy of Inventors and the Intellectual Property Owners Association, 2021

ASU is measured not by whom it excludes, but by whom it includes and how they succeed.

– Excerpt from ASU's Charter

**A top university worldwide
for academic reputation**

– Times Higher Education, World Reputation
Rankings, 2021

**#6 in the U.S. for total
total research expenditures**

among universities without a medical school
– National Science Foundation HERD Survey,
2022

**A top U.S.
university**

– QS World University
Rankings: USA, 2021

#1
**in the U.S. for
innovation**



ASU ahead of MIT and Stanford

– U.S. News & World Report
8 years, 2016–2023

**#1 public university
in the U.S. chosen
by international
students**

Ahead of the University of Illinois at Urbana-Champaign,
University of California San Diego, Purdue University and UCLA
– Institute of International Education, 2021

**#1 in the U.S. and
#2 in the world
for global impact**

**Ahead of MIT, New York University
and Penn State**

– Times Higher Education, 2022

See more rankings at
asu.edu/ourrankings.

11,000+
international
students.

152+
countries
represented
at ASU.

4,400+
invention
disclosures.

500+
people
employed at
ASU-linked
startups.

400+
research
opportunities.

1,000+
student clubs
(140+ international
student-specific
clubs) at ASU.

asu.edu/clubs

Culture and excellence

Culture at ASU

The ASU community is rich in many cultural, social and global traditions. Through Culture at ASU events and programming, students have many opportunities to engage with their peers in a globally aware context. Culture at ASU promotes identity, inclusion and expression to build a strong Sun Devil community reflective of ASU's charter. Students lead the initiative, collaborating to build intersectional programs that celebrate cultural identities, foster a sense of belonging on campus and help expand the cultural awareness of all Sun Devils. Follow Culture at ASU on social media to learn about heritage celebrations, civility on campus and many cultural events.

asu.edu/culture

Student organizations headquartered at the Student Pavilion:

Alliance of Indigenous People
Asian/Asian Pacific American Student Coalition
Black African Coalition
Coalition of International Students
El Concilio (Chicanx, Hispanic, Latinx) Coalition
Rainbow (LGBTQIA) Coalition
Undergraduate Student Government, Tempe campus
Women's Coalition

Barrett, The Honors College

Barrett, The Honors College is designed to enhance the ASU undergraduate experience. Think of it as having dual citizenship in both Barrett and ASU. Barrett students have access to the vast resources of ASU while being part of a small living-learning community of scholars. In addition, they get personalized attention, exclusive faculty interaction, and special internship and research opportunities.

asu.edu/honorscollege



We know family is important to your university experience. Watch this video about welcoming new families to ASU.



Barrett is the
“gold standard”
among the nation’s
honors colleges.

— The New York Times



Recent ASU and Mastercard Foundation Scholar alumna **Ntombizodwa M.** from Harare, Zimbabwe won a full scholarship to study at Cambridge University in England to pursue her MD-PhD. While at ASU, she worked on cervical cancer detection and cofounded a project called Female Dreamers that aims to empower girls and women to be economically independent. It won several awards, including the Millennium Fellowship with the United Nations, the Changemaker Award at ASU, Venture Devils funding, and the Pitchfork Award for Global Change and Global Impact Project, which was presented at the Clinton Global Initiative.



"I chose Arizona because of the weather, but when I came here and studied, I loved it. People would not believe me when I say I have friends from all over the world. I have friends from Japan, Korea, Brazil, even Mexico — **if you have friends from different cultures and different backgrounds, you can learn a lot!**"

Abdulrahman A.
Kuwait
English (linguistics)



"ASU has been a very welcoming place. The people, culture and environment are very inclusive. It is easy to find help and resources for anything, it is easy to relax and have fun, and most importantly, **it is not hard at all to succeed personally, academically and professionally, thanks to the warm, supportive atmosphere at ASU!**"

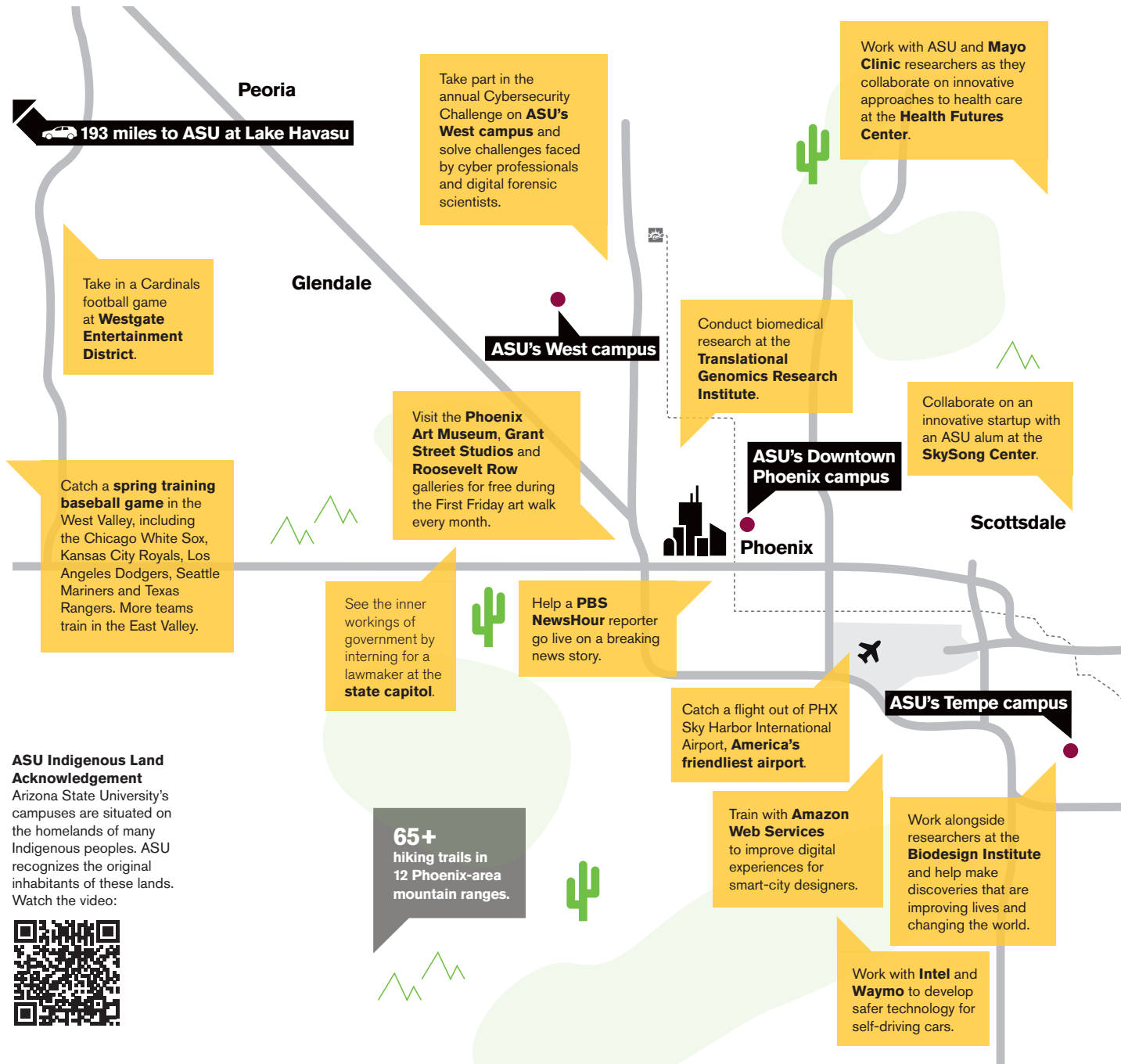
Wina K.
Indonesia
Mathematics and statistics

ASU and the metro Phoenix area — diverse and innovative communities

5th-largest city
in the U.S.
— U.S. Census

Just like ASU, the Phoenix area is a diverse community filled with people from all around the world. And like ASU, Phoenix is a forward-thinking place with innovative ideas constantly being born and nurtured. That's why ASU's campus communities fit so well within the Phoenix community.

asu.edu/phoenix



ASU Indigenous Land Acknowledgement
Arizona State University's campuses are situated on the homelands of many Indigenous peoples. ASU recognizes the original inhabitants of these lands. Watch the video:



Top 10 best place to find a job.

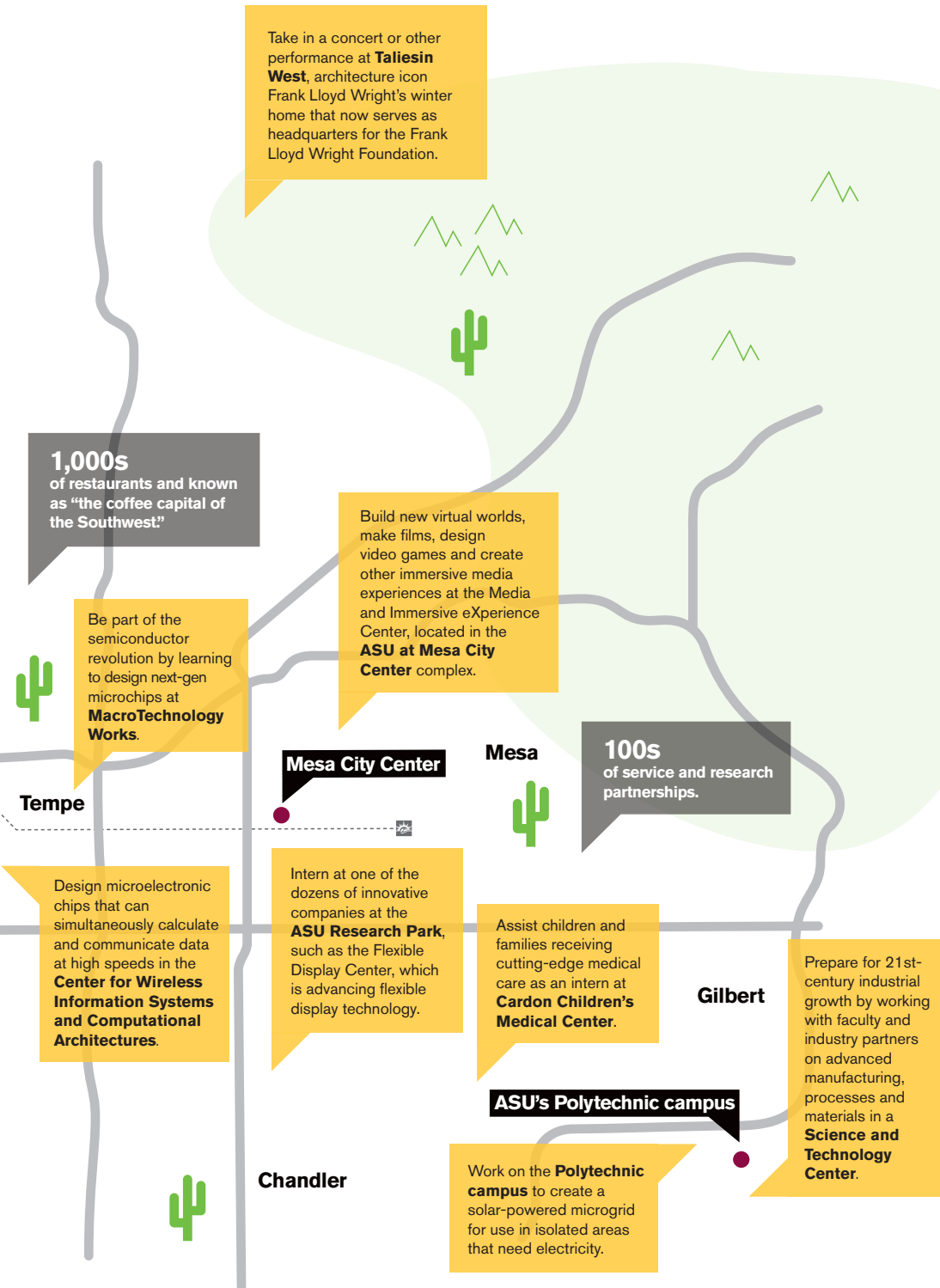
Scottsdale
- WalletHub

Fortune 500

All of Arizona's Fortune 500 companies are based in the Phoenix area.
- Fortune

Top 10 among U.S. universities for tech company hires.

- SHL, 2020



See

Phoenix is home to six professional sports teams, including a professional soccer team.

Access to: art walks, conventions, museums, music festivals and concerts, and eclectic architecture.



Do

Arizona is home to three national parks, including Grand Canyon National Park (one of the seven natural wonders of the world). The Phoenix area is also home to three of the largest city parks.

Access to: Phoenix Sky Harbor International Airport, the Grand Canyon and more.



Taste

Offering outstanding and healthy food choices from around the world — you're sure to find a taste of home.

Access to: restaurants serving our famous Southwest cuisine, coffee shops, food trucks and great international grocery stores with a variety of items from around the world.



Easy access to home

Phoenix Sky Harbor International Airport is one of the busiest airports in the U.S. It's also known as America's friendliest airport. It's easy to reach from all of ASU's campuses, has more than 1,200 flights arriving and departing every day, and offers service to 23 international destinations.

A university in many places

ASU's four main campuses are located in the metro Phoenix area, and we also have a location in Lake Havasu City on the California border. Each location has its own size, feel and academic focus, but all are the same ASU. Unlike other U.S. universities that have satellite or branch campuses, ASU students travel between campuses for classes, athletics or social activities.

asu.edu/asucampuses

See which campus houses your major

Take a virtual tour of any (or all) of the campuses, and try out our campus fit quiz to see which ASU location best suits you.

asu.edu/campusfit

ASU Online

ASU offers 200+ degree programs entirely online, empowering you to become a Sun Devil wherever you are.

asuonline.asu.edu

Downtown Phoenix campus

The Downtown Phoenix campus plays an essential role in the health care, journalism, public service and corporate communities. Think professional and fast-paced.

Student-to-faculty ratio: 15-to-1

Average class size: 29

Number of students: 11,420



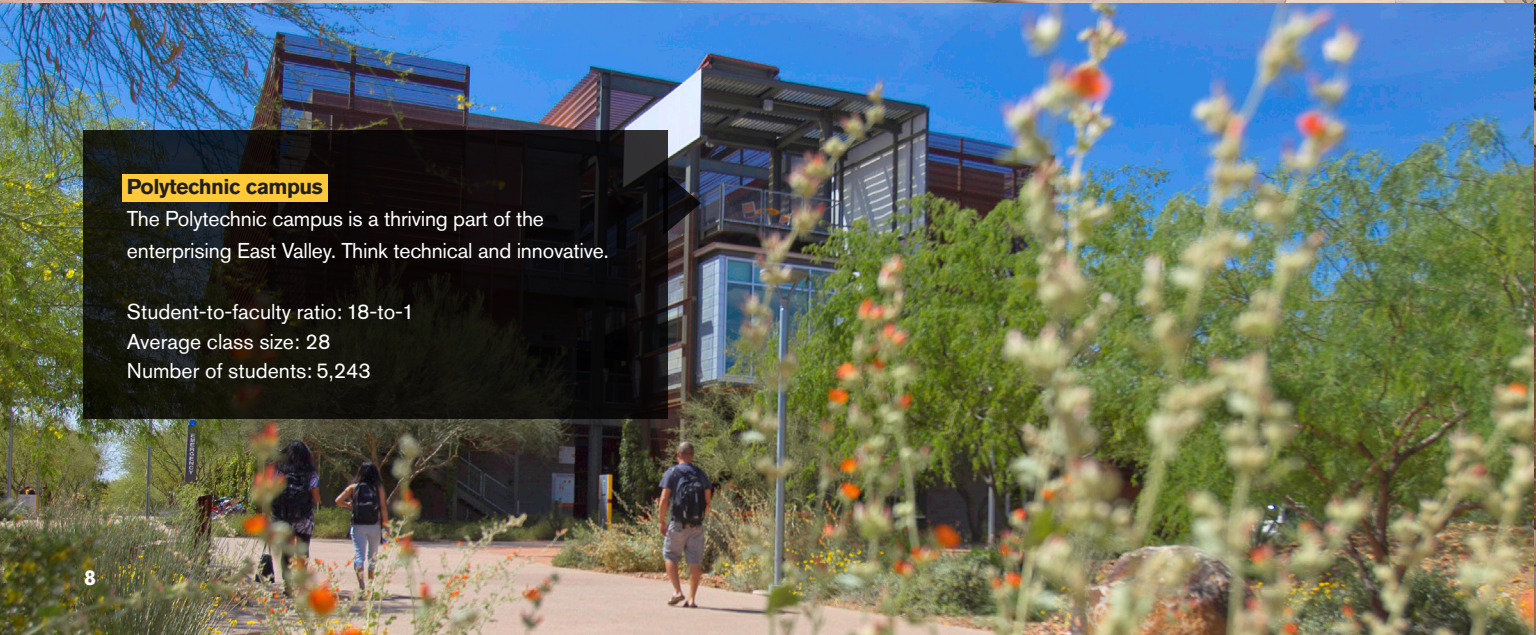
Polytechnic campus

The Polytechnic campus is a thriving part of the enterprising East Valley. Think technical and innovative.

Student-to-faculty ratio: 18-to-1

Average class size: 28

Number of students: 5,243



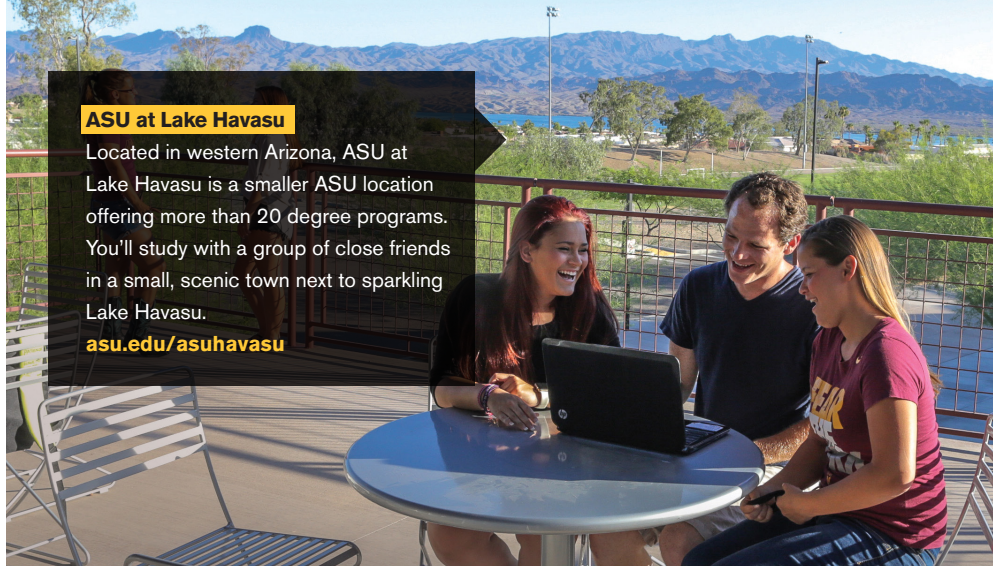


**Our biggest
virtual campus
tour ever**

The College Tour

Watch ASU's episode of "The College Tour" on Amazon Prime and YouTube to hear from current students on their experiences and get an in-depth guided tour of all four campuses.

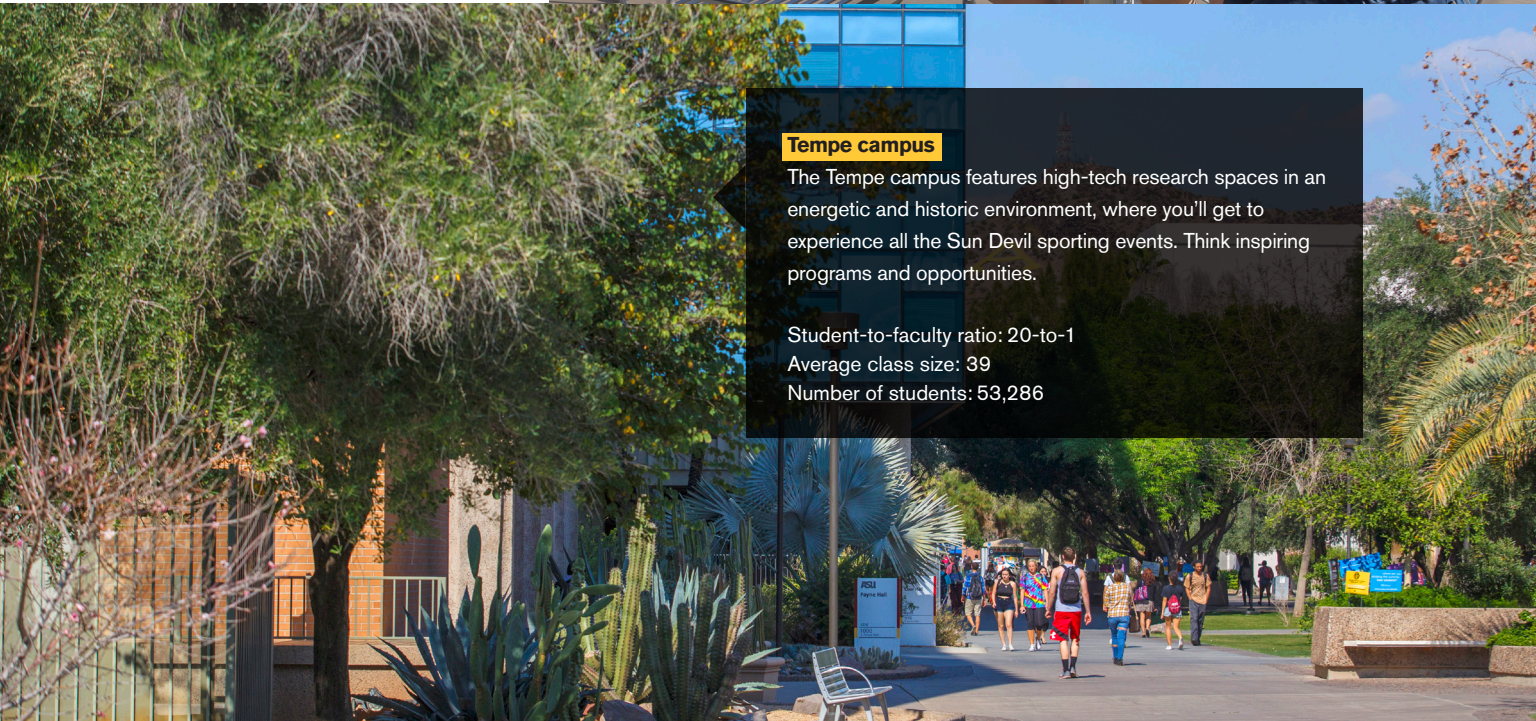
asu.edu/college-tour



ASU at Lake Havasu

Located in western Arizona, ASU at Lake Havasu is a smaller ASU location offering more than 20 degree programs. You'll study with a group of close friends in a small, scenic town next to sparkling Lake Havasu.

asu.edu/asuhavasu



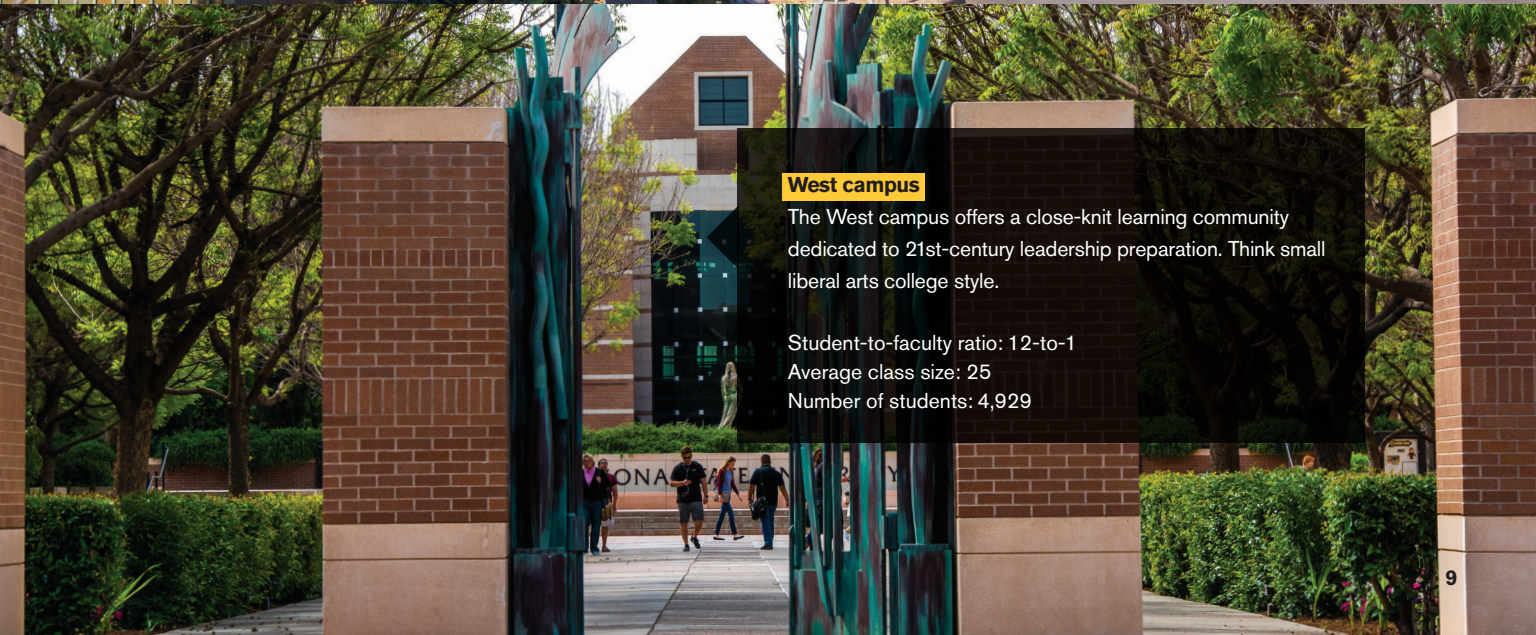
Tempe campus

The Tempe campus features high-tech research spaces in an energetic and historic environment, where you'll get to experience all the Sun Devil sporting events. Think inspiring programs and opportunities.

Student-to-faculty ratio: 20-to-1

Average class size: 39

Number of students: 53,286



West campus

The West campus offers a close-knit learning community dedicated to 21st-century leadership preparation. Think small liberal arts college style.

Student-to-faculty ratio: 12-to-1

Average class size: 25

Number of students: 4,929

Your campus **community**

Welcome to your new home

At ASU, first-year students, also known as freshmen, live in a residence hall on the campus of their major. ASU's housing options come with many benefits, including:

- Nearby access to classes, professors, libraries and tutoring services.
- Nearby access to the fitness complex and dining halls.
- Furnished rooms with Wi-Fi and cable, and nearby laundry facilities.
- Common recreation and study areas, and community kitchens.
- Special programming and events for residence hall community members.

Live with your classmates

If you are a first-year student, you will live in a residential college on the same floor as others in your academic program, meaning that from the start of your college experience, you'll have built-in study partners and friends.

Fact: On average, undergraduate students who live on campus do better academically and are more likely to graduate than students who live off campus.

asu.edu/livingoncampus

Note: Housing for upper-division and graduate students is not based on academic programs, and is limited on each campus and not guaranteed.

asu.edu/offcampus

Resources and academic engagement

International Students and Scholars Center

ASU's International Students and Scholars Center, or ISSC, is here to help you maintain compliance with visa regulations, as well as provide programming and advising to enrich your ASU experience.

issc.asu.edu

International Student Engagement

Being involved outside of the classroom is an important part of the American college experience. ASU's International Student Engagement helps you find and connect with involvement opportunities.

asu.edu/ise

Earn ASU credit abroad

As a world traveler coming to the U.S., why not continue your explorations by participating in an ASU study abroad program? The Study Abroad Office provides more than 250 program options in 65+ countries. You can earn ASU course credit in another country through a program as short as a week to as long as an academic year (and everything in between).

mystudyabroad.asu.edu

Support services include:



Mentorship

Use the mentor network or connect with a professor.

mentorship.asu.edu



eAdvisor™

Stay on the path to graduation with this online tool.

eadvisor.asu.edu



ASU Mobile App

Access grades, maps, events, resources and more on your phone.

m.asu.edu



Tutoring

Get help understanding difficult course concepts.

tutoring.asu.edu



Faculty office hours

Drop in on professors to chat about your classes.



Student accessibility services

Get services and support if you need special accommodations.

eoss.asu.edu/accessibility



Academic advising

Receive guidance as you map out your degree path.

students.asu.edu/advising



First-year success coaching

Get matched with an upper-division student who can help you navigate your first year.

success.asu.edu



Counseling 24/7/365

Receive free, unlimited counseling services day or night, no matter where you are in the world.

counseling.asu.edu



Health and wellness

Work out at the campus gym and have access to comprehensive health care on campus.

fitness.asu.edu asu.edu/health



Family support

Your family can get resources and updates to keep them connected to ASU.

eoss.asu.edu/family



ASU Health Services

What do you do if you get sick while at ASU? You go to ASU Health Services. This full-service care clinic offers lots of health services including primary care, immunizations, acupuncture, allergy shots, women's health services and more. And if you have specific cultural needs when visiting a doctor, just let ASU Health Services know and they will do all they can to accommodate. And remember, as an international student, you'll need to have health insurance. Learn more about the Student Health Insurance Plan at eoss.asu.edu/health/billing-insurance/coverage-options.



Nutrition

ASU offers a wide variety of options in the campus dining halls, including vegetarian, vegan, gluten free, Halal and a range of international cuisine. You'll also have access to a nutritionist who can answer any questions you may have.

sundevidining.asu.edu



Fall priority
application date:
May 1

Spring priority
application date:
Nov. 1

Admission requirements for undergraduates

(Bachelor's degrees)

First-year students must have a minimum 3.00 GPA from a U.S. high school or the equivalent of high school from a country outside the U.S. (4.00 = "A").

Transfer students must have graduated high school and have a minimum 2.50 GPA from their college or university.

Transfer students are considered anyone with 12 or more transferable credits completed post high school.

Students with more than 12 transferable credits may have higher admission requirements.

asu.edu/undergradadmission
admission.asu.edu/international/undergrad-apply
admission.asu.edu/international/undergrad/english-proficiency

English proficiency requirements

Test scores are required from one of the following:

- Test of English as a Foreign Language (TOEFL) paper-based test (pBT): minimum 57.
- International English Language Testing System (IELTS): minimum 6.0.
- Pearson Test of English (PTE): minimum 53.
- Duolingo English test: minimum 95.
- Global Launch: ASU accepts completion of Global Launch English courses as proof of English proficiency (see page 13).

Note: Some programs require higher English proficiency scores. Review your degree program of interest for details.

Admission requirements for graduates

(Master's, doctoral programs)

Applicants must have a U.S. bachelor's degree or higher from a regionally accredited institution, or the equivalent from an officially recognized institution.

Applicants must have maintained a minimum 3.00 GPA in the last 60 semester hours or 90 quarter hours of undergraduate coursework (4.00="A").

Each academic department has the option of requiring test scores, letters of recommendation and other supporting documents. The types of undergraduate coursework completed may also be considered. Review ASU's minimum standards and your degree program's standards, application materials and submission timelines in ASU's Graduate Degree Search.

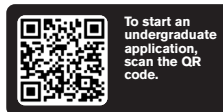
asu.edu/grad
admission.asu.edu/international/graduate-apply

English proficiency requirements

Test scores are required from one of the following:

- TOEFL: minimum 550 (pBT) or 80 (iBT).
- IELTS: minimum 6.5.
- PTE: minimum 60.
- Duolingo English test: minimum 105.
- Global Launch: see page 13.

Note: Some programs require higher English proficiency scores. Review your degree program of interest for details.



Conditional admission

ASU may offer conditional undergraduate admission to international applicants who meet the academic aptitude requirements but are not yet proficient in English. This offer of conditional admission will give the student time to improve their English proficiency before starting classes at ASU. A conditional admission offer is valid for up to three semesters, during which time the student must meet one of the English proficiency requirements.

admission.asu.edu/international/undergrad/english-proficiency



English language and academic prep

Global Launch

ASU Global Launch provides English language and academic preparation for international students who want to improve their English for university admission or career advancement. Global Launch is offered in face-to-face or online courses.

globallaunch.asu.edu

English language program

This on-campus or online program provides immersive language and cultural experiences to improve your English and academic skills. When you finish the program, you can transfer into select ASU degree programs without a TOEFL score.

globallaunch.asu.edu/ELP

Online English for ASU admission

ASU accepts Global Launch's English for Admission and Achievement online courses as proof of English proficiency for admission into ASU undergraduate and select graduate degree programs.

globallaunch.asu.edu/admission

ASU-USA Pathways

This program is for first-year undergraduate international students who want to ease into the American university experience and begin their for-credit degree study while receiving additional language and cultural support.

globallaunch.asu.edu/pathways

Note: Most graduate schools accept Global Launch as proof of English proficiency for graduate admission. For more information, please visit globallaunch.asu.edu/learn-english/asu-admission.



me3® major and career quiz

Not sure which major to choose? Start by taking the me3® quiz to see how your interests match with ASU degrees and career paths. Then design the future you want by charting an academic pathway to a degree program that leads to a successful career.

asu.edu/me3



Official transcripts

Submit your high school transcripts and transcripts from any colleges or universities you have attended, in the original language and with an official English translation.

asu.edu/transcripts



Research and training

As a student at ASU, you can play an important role working alongside professors on meaningful research projects.

research.asu.edu | issc.asu.edu



Course equivalency search

The transfer process is a simple transition from your U.S. community college to ASU. Visit tcg.asu.edu to match courses you have already taken with an equivalent course at ASU.



MyPath2ASU™

This admission program creates a seamless transfer experience to ASU after earning credits or an associate degree from a U.S. community college or university.

admission.asu.edu/transfer/MyPath2ASU



ASU Prep Digital

You can take a single online course or enroll full time in a diploma-granting program through ASU Prep Digital, an accredited online high school that offers both high school and university credit.

asuprepdigital.org

Undergraduate degrees

(Bachelor's degrees)

Look online to learn about required courses (major map), admission requirements and related careers.

asu.edu/degreetlist



To view the degree list online, scan the QR code.

Key

- D Downtown Phoenix campus
- P Polytechnic campus
- T Tempe campus
- W West campus
- H ASU at Lake Havasu
- O Online
- ◻ Other ASU locations

Pre-health and pre-law — Interested in being a lawyer, doctor or health care professional? ASU's faculty in the pre-health and pre-law programs mentor and prepare students to pursue careers in these fields. prehealth.asu.edu | prelaw.asu.edu

ASU locations — You can earn a high-quality ASU bachelor's degree at a reduced tuition rate by studying at one of ASU's locations across the state of Arizona. Programs are currently offered at ASU at Cochise, ASU at Lake Havasu, ASU at Pima, ASU at Pinal, ASU at TheGilaValley, ASU at Yavapai and ASU at Yuma.

admission.asu.edu/transfer/asu-cochise | [/asu-pima](http://asu-pima) | [/pinal](http://pinal) | [/the-gila-valley](http://the-gila-valley) | [/asuyavapai](http://asuyavapai) | [/asu-yuma](http://asu-yuma)

Location	Program
T W O ◻	Accountancy
T	Actuarial Science
	Aeronautical Management Technology
P	Air Traffic Management
P	Air Transportation Management
P	Professional Flight
P	Unmanned Aerial Systems
T O ◻	African & African American Studies
T	American Indian Studies
T	American Studies
T O ◻	Anthropology
	Applied Science
P O ◻	Applied Leadership
P	Aviation
O ◻	Early Childhood Studies
D	Emergency Management
D O ◻	Food & Nutrition Entrepreneurship
P O ◻	Graphic Information Technology
D W O ◻	Health Entrepreneurship & Innovation
D P W O ◻	Health Sciences
P O ◻	Internet & Web Development
P O ◻	Medical Laboratory Science
P O ◻	Operations Management
P T O ◻	Project Management
P	Technical Communication
T	Architectural Studies
	Art
T	Animation
T	Art Education
T O ◻	Art History
T O ◻	Art Studies

Location	Program
T	Ceramics
O ◻	Digital Photography
T	Intermedia
T O ◻	Museum Studies
T	Painting & Drawing
T	Photography
T	Printmaking
T	Sculpture
T	Textiles
	Arts
	Asia Studies
T	East Asia
T	South Asia
T	Southeast Asia
	Asian Languages
T	Chinese
T	Japanese
	Asian Pacific American Studies
O ◻	Astronomical & Planetary Sciences
T O ◻	Biochemistry
T O ◻	Medicinal Chemistry
	Biological Sciences
T O ◻	Biology & Society
T O ◻	Biomedical Sciences
T O ◻	Conservation Biology & Ecology
T O ◻	Genetics, Cell & Developmental Biology
T O ◻	Neurobiology, Physiology & Behavior
P	Biological Sciences, Applied
P	Natural Resource Ecology
P O ◻	Preveterinary Medicine
P	Secondary Education in Biology
P	Sustainable Horticulture
	Biology
W H	Pharmacology/Toxicology
W	Biophysics
T	Biotechnology & Bioenterprise
	Business
P W H O ◻	Business Administration
T	Business Exploratory
P T W H O ◻	Communication
O ◻	Corporate Accounting
T O ◻	Financial Planning
P O ◻	Food Industry Management
O ◻	Global Agribusiness
O ◻	Global Leadership
W O ◻	Global Logistics Management
T	Global Politics
W	Health Care
P O ◻	Human Resources
W O ◻	Information Security
T W	Language & Culture
T O ◻	Law
T O ◻	Public Service & Public Policy
O ◻	Retail Management
T O ◻	Sports Business
W	Statistics
P T W O ◻	Sustainability
P	Technology
T O ◻	Tourism
T O ◻	Business Data Analytics
T O ◻	Business Entrepreneurship
	Chemistry
T	Environmental Chemistry
T	Civic & Economic Thought & Leadership
D	Clinical Exercise Science
D P T W H O ◻	Communication
D W O ◻	Community Advocacy & Social Policy
D	Community Development
D W H O ◻	Community Health
W	Computational Forensics

Location	Program
T	Computational Mathematical Sciences
T O ◻	Computer Information Systems
T	Computer Science
T	Cybersecurity
T	Software Engineering
	Computing, Applied
W	Cybersecurity
W	Conflict Resolution
T	Construction Management & Technology
P O ◻	Counseling & Applied Psychological Science
P	Substance Abuse & Addictions
D W H O ◻	Criminology & Criminal Justice
D W O ◻	Policing
	Dance
T	Dance Education
T O ◻	Data Science
D O ◻	Dietetics
T O ◻	Digital Audiences
T O ◻	Digital Culture
T	Art
T	Design
T	English
T	Film
T	Graphic Information Technology
T	Interdisciplinary Arts & Performance
T	Media Processing
T	Music
T	Theatre
O ◻	Digital Media Literacy
W	Disability Studies
	Earth & Environmental Studies
T	Earth & Space Exploration
T	Astrobiology & Biogeosciences
T	Astrophysics
T	Exploration Systems Design
T	Geological Sciences
T O ◻	Economics
T	Politics & the Economy
T O ◻	Education, Early Childhood & Early Childhood Special Education
P T W H	Education, Elementary
T	Educating Multilingual Learners
P T W	Education, Exploratory
P T W O ◻	Education, Secondary
P T W	Biological Sciences
P T W	English
P T W	History
P T W	Mathematics
T W	Education, Special
T W	Visual Impairment
P T W O ◻	Education, Special Education & Elementary
P T W O ◻	Educational Studies
O ◻	Early Childhood Education
P	Engineering
P	Automotive Systems
P	Electrical Systems
P	Mechanical Engineering Systems
P	Robotics
	Engineering, Aerospace
T	Aeronautics
T	Astronautics
T	Autonomous Vehicle Systems
T	Engineering, Biomedical
T	Biological Devices
T	Biomedical Devices
T	Engineering, Chemical
T	Engineering, Civil
T	Sustainable Engineering

Location	Program
	Engineering, Computer Systems
	Cybersecurity
	Engineering, Construction
	Engineering, Electrical
	Electric Power & Energy Systems
	Engineering, Environmental
	Engineering, Human Systems
	User Experience
	Engineering, Industrial
	Engineering, Manufacturing
	Engineering, Materials Science &
	Engineering, Mechanical
	Computational Mechanics
	Energy & Environment
	Engineering, Software
	Engineering Management
	English
	Creative Writing
	Linguistics
	Literature
	Secondary Education
	Writing, Rhetorics & Literacies
	Environmental & Resource Management
	Environmental Design
	Environmental Science
	Family & Human Development
	Fashion
	Film & Media Production
	Film
	Film & Media Studies
	Filmmaking Practices
	Finance
	Food & Nutrition Entrepreneurship
	Forensic Science
	French
	Gender, Women & Sexuality Studies
	General Studies
	Geographic Information Science
	Geography
	Meteorology-Climatology
	German
	Global Health
	Global Management
	Global Studies
	Graphic Design
	Graphic Information Technology
	Full-Stack Web Development
	User Experience
	Health Care Administration & Policy
	Health Care Compliance & Regulations
	Health Care Coordination
	Health Education & Health Promotion
	Health Entrepreneurship & Innovation
	Health Sciences
	Healthy Lifestyles & Fitness Science
	History
	Secondary Education
	History of Science, Ideas & Innovation
	Honors College
	Industrial Design
	Informatics
	Informatics, Biomedical
	Information Technology
	Innovation in Society
	Integrative Health
	Integrative Social Science
	Interdisciplinary Arts & Performance
	Interdisciplinary Arts & Sciences
	Interdisciplinary Studies
	Organizational Studies

Location	Program
	Interior Design
	International Letters & Cultures
	Arabic Studies
	Classical Civilization
	Classics
	International Public Health
	International Trade
	Italian
	Jewish Studies
	Journalism & Mass Communication
	Justice Studies
	Kinesiology
	Landscape Architecture
	Latin American Studies
	Liberal Studies
	Management
	Marketing
	Digital & Integrated Marketing
	Communications
	Professional Sales
	Mass Communication & Media Studies
	Mathematics
	Secondary Education
	Statistics
	Mathematics, Applied
	Mathematics for the Life & Social Sciences, Applied
	Medical Studies
	Microbiology
	Medical Microbiology
	Molecular Biosciences & Biotechnology
	Music
	Music & Culture
	Popular Music
	Music Learning & Teaching
	Music Therapy
	Neuroscience
	Nonprofit Leadership & Management
	American Indian Studies
	Nursing
	Nutritional Science
	Organizational Leadership
	Project Management
	Parks, Recreation & Sports Management
	Performance
	Collaborative Piano
	Guitar
	Jazz
	Keyboard
	Music Theatre
	Orchestral Instrument
	Voice
	Performance & Movement
	Pharmacology & Toxicology
	Philosophy
	Morality, Politics & Law
	Science, Nature & Mind
	Philosophy, Religion & Society
	Physical Education
	Physics
	Physics, Applied
	Political Science
	Politics & the Economy
	Population Health
	Psychology
	Forensic Psychology
	Psychological Science
	Public Health

Location	Program
	Public Service & Public Policy
	American Indian Studies
	Business
	Criminology
	Emergency Management & Homeland Security
	Health Policy
	Law & Policy
	Nonprofit Leadership & Management
	Parks & Recreation Management
	Science & Technology Policy
	Social Services Delivery
	Sustainability
	Quantitative Science, Applied
	Recreation Therapy
	Religious Studies
	Religion, Culture & Public Life
	Religion, Politics & Global Affairs
	Russian
	Science, Technology & Society
	Social & Behavioral Sciences
	Social & Cultural Analysis
	American Studies
	Ethnicity, Race & Indigenous Studies
	Latin American Studies
	Peace Studies
	Queer & Sexuality Studies
	Women & Gender Studies
	Social Justice & Human Rights
	Social Work
	Sociology
	Spanish
	Speech & Hearing Science
	Sports Journalism
	Sports Science & Performance Programming
	Statistics
	Supply Chain Management
	Sustainability
	Sustainable Food Systems
	Technical Communication
	User Experience
	Technological Entrepreneurship & Management
	Technological Leadership
	Theatre
	Acting
	Design & Production
	Theory & Composition
	Composition
	Theory
	Tourism Development & Management
	Meetings & Events
	Resort & Hotel Leadership
	Sustainable Tourism
	Tourism & Recreation Management
	Transborder Chicana/o & Latina/o Studies
	Undecided — Exploratory
	Applied Computing, Mathematics & Technology
	Health & Life Sciences
	Humanities, Fine Arts & Design
	Math, Physical Sciences, Engineering & Technology
	Social & Behavioral Sciences
	Urban & Metropolitan Studies
	Urban Planning

Graduate degrees

(Master's, doctorate and certificate)

Find more information about ASU's graduate programs, including colleges, detailed program descriptions, and admission standards and processes by visiting asu.edu/gradprograms.



To view the degree list online, scan the QR code.

Key

- D** Downtown Phoenix campus
- TU** Tucson
- P** Polytechnic campus
- W** West campus
- T** Tempe campus
- O** Online
- Other ASU locations**

- ➔** Indicates an accelerated 4+1 degree program. ASU offers a streamlined path to a master's degree from ASU undergraduate programs, reducing the time it takes to get a master's degree from two years to one year.
- ⊗** Indicates a concurrent degree program. ASU offers high-achieving graduate students the opportunity to complete two distinct but complementary graduate degrees at the same time.
- ⊕** A two-year program is for applicants who have completed a four-year undergraduate degree in the same discipline as the graduate program. A 3+ program is for applicants with an undergraduate degree in a discipline different than the graduate program.

Location	Program	Degree
T	Accountancy	PhD
T, O, P	Accountancy & Data Analytics	MAcc ⊕
T	Actuarial Science	MS ⊕
D	Acute Care Pediatric Nurse Practitioner	Certificate
O	Addiction & Substance-Use Related Disorders	Certificate
T, O	Addiction Psychology	MS
D, O	Adult Gerontology Nurse Practitioner	Certificate
T, O	Advanced Analytics in Higher Education	Certificate
D	Advanced Nursing Practice	DNP
D	Acute Care Pediatric Nurse Practitioner	DNP
D	Adult-Gerontology Nurse Practitioner	DNP ⊕
D	Family Nurse Practitioner	DNP
D	Family Psychiatric & Mental Health Nurse Practitioner	DNP
D, O	Innovation Leadership	DNP
D	Neonatal Nurse Practitioner	DNP
D	Pediatric Nurse Practitioner	DNP
D	Women's Health Nurse Practitioner	DNP
T	Aerospace Engineering	MS ⊕, PhD
T	African Studies	Certificate
D, O	Aging	MS ⊕
P	Agribusiness	PhD
T	American Indian Studies	
T	Indigenous Rights & Social Justice	MS ⊕
T	Tribal Leadership & Governance	MS ⊕ ⊕
T	American Studies	MA ⊕
T	Animal Behavior	PhD
T	Anthropology	PhD
T	Complex Adaptive Systems Science	PhD
T, O	Applied Behavior Analysis	Cert., MS
P	Applied Biological Sciences	MS ⊕
O	Applied Leadership & Management	MALM ⊕
T	Applied Mathematics	PhD
T	Applied Mathematics for the Life & Social Sciences	PhD
T	Complex Adaptive Systems Science	PhD

Location	Program	Degree
T, O	Architecture	MA ⊕ ⊕
T	Energy Performance/Climate Responsive Architecture	MS
T	Art	MFA
T	Digital Technology	MFA
T	Art Education	MA
T	Art History	MA
T	Asian Languages/Civilizations	
T	Chinese	MA
T	Japanese	MA
T	Asian Studies	Certificate
D	Assessment of Integrative Health Modalities	Certificate
T	Astrophysics	PhD
T	Astrophysics & Astronomy	MS
T	Audiology	AuD
T	Auditory & Language Neuroscience	MS ⊕
O	Autism Spectrum Disorders, An Overview of	Certificate
O	Behavioral Health	
O	Clinical Management	DBH
O	Management	DBH
T	Biochemistry	MS, PhD
T	Medicinal Chemistry	MS ⊕
W	Biological Data Science	MS ⊕
T	Biological Design	MS, PhD
T	Biology	MS ⊕, PhD
T	Biology & Society	MS ⊕, PhD
T	Complex Adaptive Systems Science	PhD
O	Biomedical Diagnostics	MS
T	Biomedical Engineering	MS ⊕, PhD
T	Biomedical Informatics	MS ⊕, PhD
O	Biomimicry	Cert., MS
D	Biotechnology & Genomics	LLM
T	Business Administration	
T	Business Analytics	MBA
T	Information Systems Management	MBA
T, O, P	Business Analytics	MS ⊕
T	Chemical Engineering	MS ⊕, PhD
T	Chemistry	MS, PhD
T	Civil, Environmental & Sustainable Engineering	MS ⊕, PhD
T	Classical Liberal Education & Leadership	MA ⊕
D	Clinical Exercise Physiology	MS ⊕
O	Clinical Research Management	Cert., MS
O	Regulatory Science	MS
T, O	Communication	MA, PhD
T	Communication Disorders	MS
T	Communication Disorders in Multilingual/Multicultural Populations	Certificate
W	Communication Studies	MA ⊕
D	Community Development Practice	MPS
D	Community Resources & Development	MS ⊕, PhD
D	Nonprofits & NGOs	MS ⊕
D	Parks & Recreation Management	MS ⊕
D	Sustainable Communities	MS ⊕
D, O	Tourism	MS ⊕
D, P	Comparative Culture & Language	PhD
D, P	Complex Adaptive Systems Science	Certificate
T, O	Complex Systems Science	MS
T	Composition	
T	Interdisciplinary Digital Media	MM
T, O	Computational Life Sciences	Certificate
T	Computer Engineering	
T	Computer Systems	MS ⊕, PhD
T	Electrical Engineering	MS ⊕, PhD
T	Computer Information Systems	PhD
T, O	Computer Science	
T	Art, Media & Engineering	MCS ⊕, MS ⊕, PhD
T	Big Data Systems	MS ⊕, PhD
T	Biomedical Informatics	MCS ⊕, MS ⊕
T, O	Cybersecurity	MS ⊕
T, O	Cybersecurity	MCS ⊕, MS ⊕, PhD
T	Computer-Assisted Language Learning	Certificate
T	Community-Engaged Practices in Design & the Arts	Certificate
T	Conducting	DMA

Location	Program	Degree
T	Construction Engineering	MSE ⊕
T	Construction Management	PhD
T, O	Construction Management & Technology	MS ⊕
D, O	Corrections Leadership & Management	Certificate
T	Counseling	MC
T	Counseling Psychology	PhD
T	Creative Enterprise & Cultural Leadership	MA ⊕
T	Creative Writing	MFA
O	Crime Analysis	Cert., MS
O	Criminal Justice	MA ⊕
O	Criminal Sentencing & Sentencing Advocacy	Certificate
D	Criminology & Criminal Justice	MS ⊕ ⊕, PhD
T, W	Critical Theory	Certificate
O	Curriculum & Instruction	
O	Early Childhood Education	MEd
O	Gifted Education	MEd
T	Dance	MFA
T	Interdisciplinary Digital Media & Performance	MFA
T	Dance Teaching Artist Praxis	Certificate
T	Data Science, Analytics & Engineering Design	PhD
T, O	Experience Design	MSD
T	Visual Communication Design	MSD
T	Design, Environment & the Arts	
T	Design	PhD
T	History, Theory & Criticism	PhD
O, O	Digital Audience Strategy	MS ⊕
O, O	Digital Audiences	Certificate
T, O	Digital Culture	MA, MS
T, O	Extended Reality Technologies	MS
T	Digital Humanities	Certificate
T	Disability Studies	Certificate
D	Domestic Violence & Evidence-Based Practice	Certificate
T	East Asian Languages & Civilization	PhD
T	Economics	PhD
O	Educating Multilingual Learners	Certificate
O	Education	MA
O	Educating Multilingual Learners Literacy Education	MA
T	Education Sciences	MS
T, O	Educational Leadership	MEd
P, W, O	Principalship	MEd
T	Educational Policy	MA ⊕
T	Educational Policy & Evaluation	PhD
T, O	Electrical Engineering	PhD, MSE ⊕ ⊕
T	Art, Media & Engineering	MS, PhD
D, T, W, O	Elementary Education	MEd
O	Teacher Certification	MEd
D, O	Emergency Management	Certificate
D, O	Emergency Management & Homeland Security	MA ⊕
D, O	Biosecurity & Threat Management	MA ⊕
D, O	Community Resilience	MA ⊕
D, O	Cybersecurity Policy & Management	MA ⊕
D, O	Emergency Management	MA ⊕
D, O	Homeland Security	MA ⊕
D	Emergency Nurse Practitioner	Certificate
T	Energy & Sustainability	Certificate
P, O	Engineering	MEng, MS ⊕
P	Engineering Education Systems & Design	PhD
O	Engineering Science	
O	Software Engineering	MSE
T, W, O	English	
T	English Education	MA ⊕
T	Literature	PhD
T	Writing, Rhetorics & Literacies	PhD
T	English Education	MA ⊕
P	Environmental & Resource Management	MS ⊕
P	Water Management	MS ⊕
D, P, T	Environmental & Sustainability Economics	Certificate
D, P, T, W	Environmental Communication & Leadership	Certificate

Location	Program	Degree	Location	Program	Degree	Location	Program	Degree
T	Environmental Engineering	MS	P	Human Systems Engineering	MS, PhD	T	Music Composition	MM, DMA
T	Environmental Life Sciences	PhD	P	Aviation Human Factors	MS	T	Music Entrepreneurship	Certificate
T	Environmental Social Science	PhD	P	Health Systems	MS	T	Music Learning & Teaching	MM
T	Complex Adaptive Systems Science	PhD	P	Intelligent Systems	MS	T	Music Performance	MM, DMA
T	Ethnomusicology	MA	P	User Experience Research	MS	T	Music Theory Pedagogy	Certificate
T	Evolutionary Biology	PhD	T	Immigration Studies	Certificate	T	Music Therapy	MM
T	Evolutionary Medicine	Certificate	D	Indian Law	Certificate	♀	Narrative & Emerging Media	MA
D	Exercise & Nutritional Sciences	PhD	T	Indigenous Education	MA	P	Narrative Studies	MA
T	Exploration Systems Design	MS	T	Industrial Design	MID, MSD	T	Natural Science	
T	Instrumentation	MS, PhD	T	Industrial Engineering	MS, PhD	T	Earth & Space Sciences	MNS
T	Sensor Networks	MS, PhD	T	Information Systems Management	MS	T	Neuroscience	PhD
T	Systems Engineering	MS, PhD	P	Information Technology	MS	D	Nonfiction Writing & Publishing	Certificate
T	Family & Human Development	MS, PhD	T	Innovation & Venture Development	MS	D	Nonprofit Leadership & Management	Cert., MNLM
D	Family Nurse Practitioner	Certificate	T	Innovation in Global Development	PhD	T	Nuclear Power Generation	Certificate
D	Family Psychiatric & Mental Health Nurse Practitioner	Certificate	T	Institutional Research & Policy Analysis	Certificate	D	Nurse Education in Academic & Practice Settings	Certificate
O	Film & Media Studies	MAS	T	Instructional Design & Performance Improvement	Certificate	D	Nursing	MS
T	Finance	MS, PhD	O	Integrated Behavioral Health		D	Entry to Nursing Practice	MS
T	Food Policy & Sustainability Leadership	Certificate	O	Clinical Management	Certificate	D	Nursing Education	MS
O	Food Safety & Protection	Certificate	O	Integrated Health Care		D	Nursing & Healthcare Innovation	PhD
O	Forensic Psychology	MS	D	Integrated Health Care	MIHC	D	Nutritional Science	MS
O	Forensic Science	PSM	P	Integrative Social Science	MS	O	Dietetics	MS
♀	Futures & Design	MS	W	Interdisciplinary Studies	MA	P	Organizational Leadership	MS
T	Gender Studies	Cert., PhD	W	Interdisciplinary Arts & Performance	MA	D	Participatory Governance	Certificate
T	Genetic Counseling	MS	T	Interior Architecture	MIA	D	Pediatric Nurse Practitioner	Certificate
T	Geographic Information Science	Cert., PhD	T	Interior Design	MSD	T	Performance	
T	Geographic Information Systems	MAS	O	International Affairs & Leadership	MA	T	Conducting	MM
T	Geography	MA, PhD	O	International Health Management	MIHM	T	Voice, Music Theatre, Opera	MM
T	Geological Sciences	MS, PhD	D	International Professional Healthy Aging	Certificate	T	Performance Pedagogy	MM
O	Gifted Education	Certificate	D	Investigative Journalism	MA	T	Philosophy	MA, PhD
D	Global Affairs & Management	MA	D	Journalism & Mass Communication	PhD	D	Physical Activity & Health	MS
♀	Global Affairs & Management - Executive	MS	D	Juris Doctor	JD	P	Physical Education	MPE
T	Global Development & Innovation	Certificate	T	Justice Studies	MS, PhD	T	Physics	MNS, PhD
O	Global Education	MEd	T	Landscape Architecture	MLA	T	Piano, Collaborative	MM
T	Global Financial Management	DBA	T	Language Teaching	MA	T	Plant Biology & Conservation	MS
T	Global Health	MA, MS, PhD	D	Latino Cultural Competency in Social Work	Certificate	O	Policy Advocacy	MA
D	Global Leadership & Strategy	MGLS	D	Law & Psychology	PhD	D	Policy Informatics	Certificate
D	Global Leadership & Strategy - Executive	MGLS	D	Law & Sustainability	Certificate	O	Political Psychology	MA
W	Global Logistics	MS	D	Law Enforcement Administration	Certificate	T	Political Science	MA, PhD
D	Global Management	Cert., MGM	D	Law, Science & Technology	Certificate	D	Population Health	PhD
D	Creative Industries & Design Thinking	MGM	D	Laws	LLM	D	Program Evaluation	Certificate
D	Data Science	MGM	D	Global Legal Studies	LLM	D	Program Evaluation & Data Analytics	MS
D	Digital Audience Strategy	MGM	W	Leadership & Innovation	EdD	P	Project Management	MPM
D	Global Affairs	MGM	O	Lean Six Sigma Black Belt Certificate	Certificate	T	Psychology	MS, PhD
D	Global Business	MGM	T	Learning Design & Technologies	Med	T	Quantitative Research Methods	PhD
D	Global Development & Innovation	MGM	T	Learning, Literacies & Technologies	PhD	D	Public Administration	Cert., MPA
D	Global Digital Transformation	MGM	T	Learning Sciences	MA	♀	Emergency Management	MPA
D	Global Entrepreneurship	MGM	D	Legal Studies	MLS	D	Nonprofit Administration	MPA
D	Global Health Care Delivery	MGM	T	Liberal Studies	MLSt	D	Public Finance	MPA
D	Global Legal Studies	MGM	T	Film & Media Studies	MLSt	D	Urban Management	MPA
D	Integrated Health Care	MGM	T	Linguistics	Certificate	O	Public Administration - Executive	EMPA
D	Nonprofit Leadership & Management	MGM	T	Linguistics & Applied Linguistics	MA, PhD	D	Public Administration & Policy	PhD
D	Public Administration	MGM	T	Management	MS, PhD	D	Urbanism	PhD
D	Public Policy	MGM	T	Management in China/Corporate	MS	O	Public Interest Technology	MS
D	Sustainability Solutions	MGM	P	Manufacturing Engineering	MS	D	Public Policy	Cert., MPP
D	Sustainable Tourism	MGM	T	Marketing	PhD	D	Environmental Policy	MPP
D	Global Management - Executive	MGM	T	Marriage & Family Therapy	MAS	D	Policy Informatics	MPP
O	Global Security	MA	D	Mass Communication	MMC	D	Science & Technology Policy	MPP
O	Cybersecurity	MA	T	Materials Science & Engineering	MS, PhD	D	Urban Policy	MPP
O	Global Security & Competitive Statecraft	Certificate	T	Mathematics	MA, PhD	O	Public Safety Leadership & Administration	MPSLA
T	Global Technology & Development	MS	T	Mathematics Education	MA, PhD	O	EMS - Mobile Integrated Health Care	MPSLA
O	Applied International Development	MS	T	Mathematics & Statistics Dept - Grades 9-20	PhD	O	Executive Fire Administration	MPSLA
P	Graphic Information Technology	MS	T	Mechanical Engineering	MS, PhD	O	Executive Police Administration	MPSLA
D	Health Care Innovation	Cert., MHI	T	Media Arts & Sciences	PhD	T	Real Estate	Certificate
D	Health Care Simulation	MS	O	Medical Nutrition	MS	T	Real Estate Development	MREDev
O	Health Informatics	MAS	T	Microbiology	MS, PhD	D	Regulatory Science	MS
D	Health Law Policy	Certificate	T	Modern Energy Production & Sustainable Use	MS	O	Food Safety	MS
D	Higher & Postsecondary Education	MEd	T	Molecular & Cellular Biology	MS, PhD	T	Religious Studies	MA, PhD
T	History	MA, PhD	T	Molecular, Cellular Tissue & Biomaterials Engineering	Certificate	T	Responsible Innovation in Science, Engineering & Society	Certificate
T	History & Philosophy of Science	PhD	T	Museum Studies	Cert., MA	T	Robotics & Autonomous Systems	
O	Homeland Security	Certificate	T	Music		T	Artificial Intelligence	MS
T	Human & Social Dimensions of Science & Technology	PhD	T	Interdisciplinary Digital Media	DMA	P	Biomedical Engineering	MS
D	Human Resources & Employment Law	MHREL	T	Music Learning & Teaching	PhD	T	Electrical Engineering	MS
			T	Musology	MA, PhD	T	Mechanical & Aerospace Engineering	MS
						P	Systems Engineering	MS

Graduate degrees continued ...

Location	Program	Degree
T	Science & Technology Policy	MSTP
D O	Science of Health Care Delivery	Cert., MS
T	Scientific Teaching in Higher Education	Certificate
T O	Secondary Education	MEd
D P T W O	Teacher Certification	MEd
T O	Semiconductor Processing	Certificate
T	Sensor Signal & Information Processing	Certificate
D T W	Sexuality Studies	Certificate
T	Social & Cultural Pedagogy	MA
D O	Social Entrepreneurship & Community Development	Certificate
W O	Social Justice & Human Rights	MA
D P T W	Social Science Research Methods	Certificate
W O	Social Technologies	MA
D P T W	Social Transformation	Certificate
D	Social Work	PhD
D TU O	Standard Program	MSW
Social Work - Advanced Standing		
W	Advanced Generalist	MSW
D TU	Direct Practice	MSW
D TU	Policy, Administration & Community Practice	MSW
T	Socio-Economic Justice	Certificate
T O	Sociology	MA, PhD
P	Software Engineering	MS
T	Spanish	MA, PhD
T	Spanish Language Pedagogy	Certificate
T	Spanish Linguistics	PhD
T O	Special Education	MEd
O	Applied Behavior Analysis	MA
O	Autism Spectrum Disorders	MA
D P T W O	Teacher Certification	MEd
T	Speech & Hearing Science	PhD
T	Auditory & Language Neuroscience	PhD
T	Translational Genetics of Communication Abilities	PhD
D	Sports Journalism	MA
D	Sports Law & Business	MSLB
T	Statistics	MS, PhD
T	Statistics & Data Science	Certificate
T	Strength & Conditioning	MS
T O	Supply Chain Management	MS, PhD
D P T W	Sustainability	Cert., MA, MS, PhD
T	Complex Adaptive Systems Science	PhD
O	Sustainability Leadership	MSL
O	Sustainability Leadership - Executive	EMSL
T	Sustainability Solutions	MSUS
T	Sustainable Energy	PhD
O	Sustainable Engineering	MSE
O	Sustainable Food Systems	MS
O	Sustainable Tourism	Cert., MST
P	Systems Engineering	PhD
T	Taxation & Data Analytics	MTax
O	Teacher Certification	Certificate
T O	Teaching English to Speakers of Other Languages	MTESOL
P O	Technical Communication	Cert., MS
Technology		
P	Aviation Management & Human Factors	MSTech
P	Management of Technology	MSTech
T	Theatre	MA
T	Dramatic Writing	MFA
T	Interdisciplinary Digital Media	MFA
T	Theatre for Youth & Community	MFA

Location	Program	Degree
T	Transborder Studies	MAS, PhD
T	Transdisciplinary Transportation Studies	Certificate
T	Translation Studies	Certificate
D	Trauma & Bereavement	Certificate
D	Trial Advocacy	Certificate
D	Tribal Policy, Law & Government	LLM
T	Urban & Environmental Planning	MUEP
T	Urban Design	MUD
T	Urban Planning	PhD
P O	User Experience	MS
T	Visual Communication Design	MVCD

Location	Program	Degree
O	W. P. Carey MBA - Custom Corporate Program	MBA
T	W. P. Carey MBA - Evening Program	MBA
T	W. P. Carey MBA - Executive Program	MBA
T	W. P. Carey MBA - Fast-Track Program	MBA
T	W. P. Carey MBA - Full-Time Program	MBA
O	W. P. Carey MBA - Online Program	MBA
T	W. P. Carey MBA - Shanghai Program	MBA
T	Women & Gender Studies	MA
D	Women's Health Nurse Practitioner	Certificate
O	World War II Studies	MA

Learn your way

As a New American University, ASU offers a world-class academic experience designed for the 21st-century learner.

Major choices in majors

Picking an undergraduate major can feel challenging. And when you see that we offer more than 400 programs, you might think we're not making the choice any easier for you. Remember, you have access to the me3[®] major and career quiz tool, and using it can help jump start your journey. Plus, our admission team is here to help you figure out what to study if you can't decide.

You can also take an exploratory track and learn more about a degree program, without losing time or credit. If you want to fast-track your degree program or pick a minor, ASU offers ways you can customize your academic experience.

Dual majors

Earn two concurrent degrees in the same time it takes to earn one, expanding your knowledge and career options.

Accelerated bachelor's and master's degrees

Expedite your studies with a 2.5- or 3-year path in an accelerated masters program, or earn your bachelor's and master's degrees earlier in a 3+1 or 4+1 program.

Minors and certificates

Become more well-rounded and boost your resume by adding a minor or certificate to your studies.

Semester lengths

Choose a traditional 15-week semester or a more concentrated 7.5-week semester. The course content and credit is the same.

Technology-enhanced learning

Experiment with active learning, adaptive learning and online learning to see which works best for you

Paying for it

ASU offers the New American University scholarship for high-achieving undergraduate international students. You may also be able to work on campus. Explore your options.

asu.edu/intuition
students.asu.edu/employment

Optional Practical Training

F-1 students can take part in Optional Practical Training and gain experience in their fields by spending a year working off campus. Also, the 24-month STEM OPT extension is an additional benefit that allows students to extend their work experience. ASU offers hundreds of STEM-eligible programs.

issc.asu.edu/students/employment/post-opt

Career services

ASU's Career and Professional Development Services offers comprehensive resources to ensure that you are career-ready, including:

- Access to our career platform, Handshake (asu.joinhandshake.com), which includes more than 40,000 internship and job opportunities.
- Customized workshops and presentations for international students.
- Virtual resources, including resume review and interview preparation.
- Career and internship fairs.
- One-on-one career advising appointments.
- Access to the ASU Mentor Network, a platform for mentorship and informational interviewing.

Take the first step by joining a career interest community. career.asu.edu

Cost of attendance for undergraduates

Based on 12 credits per semester (24 credits per year).

Base tuition	\$32,760*
Undergraduate college fee	\$1,850**
Student initiated fees	\$640
On-campus housing and meals	\$14,718***
Based on Tempe campus.	
Books and supplies	\$1,320
Transportation	\$1,386+
Personal	\$2,013+
Health insurance	\$2,935
Visa administration fee	\$200
Estimated annual total	\$57,822

The cost of attendance is the estimated cost of completing a full year as a full-time student. Costs will vary depending on personal spending habits.

Cost of attendance for graduates

Based on 9 credits per semester (18 credits per year).

Base tuition	\$26,460*
Student initiated fees	\$640
Graduate student support fee	\$260
Off-campus housing and meals	\$12,507
Books and supplies	\$1,062
Transportation	\$3,201+
Personal	\$3,630+
Health insurance	\$2,935
Visa administration fee	\$200
Estimated annual total	\$50,895

*Costs shown reflect the full-time base tuition for ASU's metropolitan Phoenix campus locations for the 2022–2023 academic year. To see costs for a specific campus, please visit tuition.asu.edu/cost-calculator/standard-costs. Program fees may apply to some graduate programs. Visit tuition.asu.edu/cost-calculator/tuition-fees to see if your program of study has additional fees.

**This fee represents the highest undergraduate college fee category. Visit the Tuition Estimator to see which fee is associated with your program of study. tuition.asu.edu/cost-calculator/tuition

***Barrett, The Honors College housing and meal costs will be higher due to the additional costs associated with the Barrett residence halls and meal plans. Students enrolled in Barrett, The Honors College will have an additional honors college program fee of \$2,000 for the academic year.

+While these costs are not factored in to the financial guarantee, students should still plan for these expenses accordingly.

We look forward to welcoming you to ASU and helping you define your experience.



Connect with an ASU team member

Attending a U.S. university can be a major transition. At ASU, you have access to your own personal representative who can help and support you through the entire admission and enrollment experience. Find your representative at asu.edu/findmyrep.



How to apply to ASU

1. Complete the application for admission. asu.edu/globalcitizen
2. Pay the application fee.
3. Send official transcripts, academic records and test scores.
4. Provide evidence of English language proficiency.



Facebook

facebook.com/FutureSunDevils



Twitter

twitter.com/FutureSunDevils



Instagram

instagram.com/FutureSunDevils



YouTube

youtube.com/ASU



Weibo



Bilibili



WeChat



Learn to thrive

Please
recycle
me

Information is subject to change. ASU is an affirmative action/equal opportunity institution. For ASU's nondiscrimination statement, visit asu.edu/titleIX.
©2022 Arizona Board of Regents for ASU. To request this publication in alternative formats, contact Admission Services at 480-965-7788.
Photo credit: Andy DeLisle, Deanna Dent, Jenny Dupuis, FJ Gaylor, Jarod Opperman, Alyssa Pakes, Scott Troyanos, Tim Trumble. Sept. 2022 / 5M / 56253.

